

FOR SALE



Edric House

Loughborough, LE11 5BE

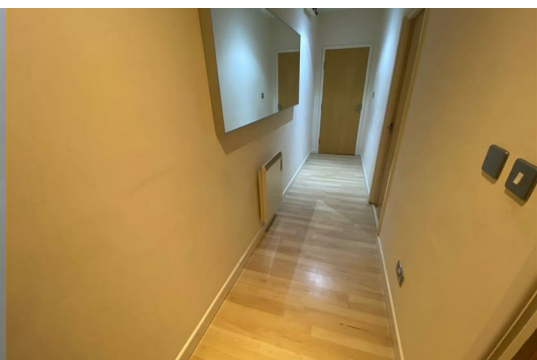
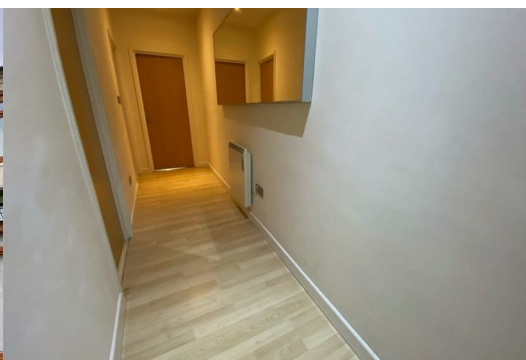
£825 Per month



A Large Furnished 2 DOUBLE Bedroom STUDENT apartment on the highly popular EDRIC HOUSE development is coming available for YOU to move into. The property is situated the town Centre allowing you to enjoy town life and still only be 15 minute walk away from the Loughborough University campus.

The property benefits from secure communal entrance doors, open plan living and kitchen area, comprising of hob and electric oven, extractor fan, fridge with freezer box and washing machine, 2 double bedrooms and shower room. The property also offers laminate wooden flooring, vinyl and tiled flooring, electric heating and full double glazing.

The Apartment is ideal for STUDENTS who are looking for easy commuting to the Loughborough University campus, town centre as well as the Rushes Shopping Centre and Local Shops, bars and restaurants.



Entrance Hall

Ceiling light points, electric heater, laminate wooden flooring and doors leading to open plan living area, bedroom 1, 2 & shower room.

Open Plan Living Area 21'11" x 15'6" (6.705 x 4.739)

Living Area

Ceiling light points, electric heater, TV media and telephone points, laminate wooden flooring, double glazed window

Kitchen Area

Ceiling light points, fully fitted kitchen offering worktops, base and wall cupboards, stainless steel sink and drainer, hot and cold mixer tap over, electric hob, electric oven and extractor fan, fridge with freezer box, washing machine and tiled flooring.

Bedroom 1 12'1" x 9'9" (3.698 x 2.978)

Ceiling light points, electric heater, double glazed window and laminate wooden flooring.

Bedroom 2 10'8" x 7'2" (3.272 x 2.192)

Ceiling light points, electric heater, double glazed window and laminate wooden flooring.

Shower Room 5'5" x 6'6" (1.661 x 1.995)

Ceiling light points, towel heater, tiled flooring, double glazed window, extractor fan, three piece suite, comprising of shower cubical, pedestal wash hand basin and low level flush toilet.

Area Map



Floor Plans



Energy Efficiency Graph

